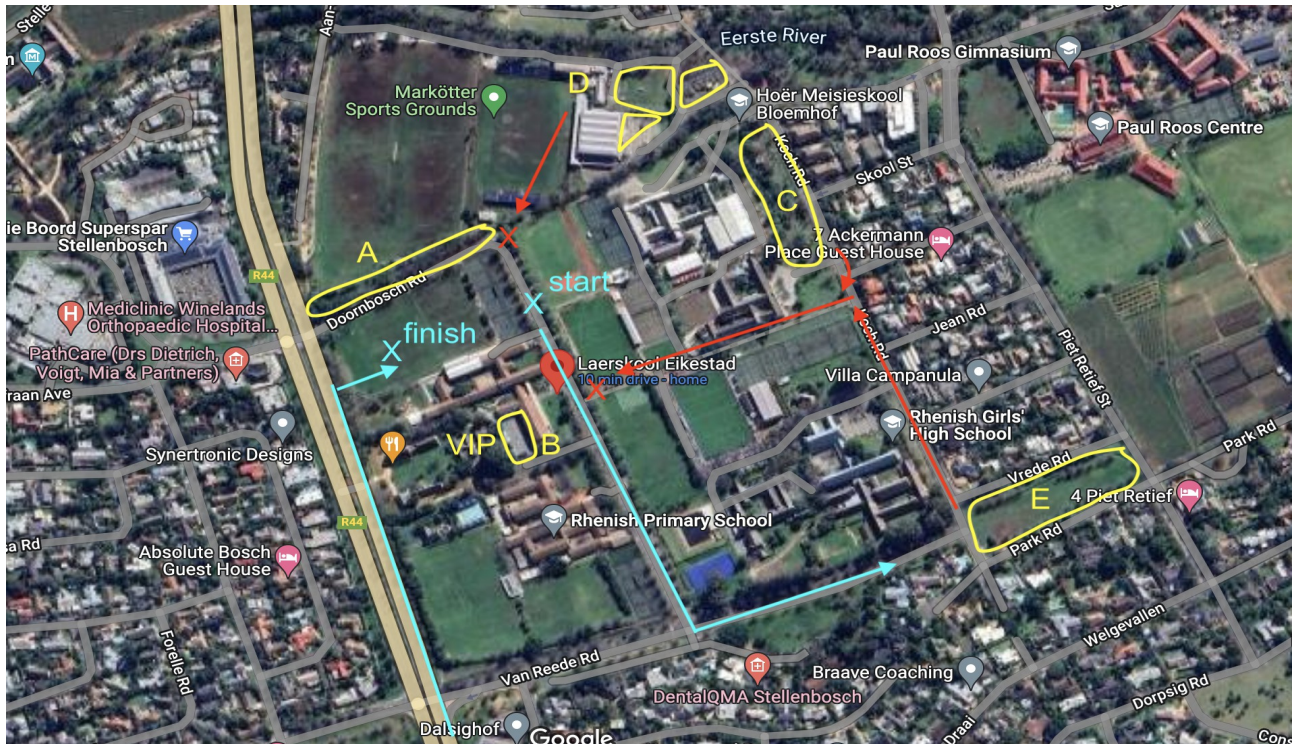


# WINELANDS MARATHON & HALF MARATHON – 26 NOVEMBER 2022

## PARKING PLAN



### A Doornbosch Street

Limited parking space is provided for **150 vehicles** and access from R44 and Van Rheede Street will be closed off once this number has been reached. Only bearers of special access discs will be allowed into Doornbosch Street after its closed off. Our Security service provider will do roving patrols in this area for the duration of the event.

### B Eikestad Primary School

This parking is allocated to sponsors, **WPA officials and club guests**. There is parking for **50 vehicles**. Access is from Van Rheede Street into Doornbosch Street. A parking marshal will be on hand to direct specific people to this parking. This marshal will also be on hand to operate the security gate for the duration of the event.

### C Bloemhof High School – Paid for parking

This is a School initiative to generate some funds. A nominal fee will ensure participants and spectators secure parking within walking distance from the start / finish area. Various marshals and volunteers will assist motorists with parking for **250 vehicles**. Access will be via the walkway between Bloemhof & Rhenish with access to Doornbosch street – where the start of the races are (*red arrows indicate walkway*). Security guards will be on site for the duration of the event.

### D Markötter Sports Grounds – Paid for parking

Vehicles will be directed to this area by parking marshals. It has parking for close to **350 vehicles**. Two parking marshals will ensure that maximum use is made of this space. Runners can enter

straight into Doornbosch street, via the gate at the corner of the Markotter sports grounds (3 red arrows). Three security guards will also be present here for the duration of the event.

## **E Open field on the corner of Koch, Vrede and Park Street**

Vehicles will be directed to the field by parking marshals. The field has parking for 500 vehicles. Two parking marshals on the field will ensure that maximum use is made of this space. Two security guards will also be present on this field for the duration of the event.

### **Summary**

Parking will be provided for 1300 vehicles as marked on the map. Security officials will be stationed at these marked areas for the duration of the event. Please arrive early and plan your route to the venue to avoid traffic delays and frustration. Athletes are advised to travel together to ensure optimal traffic flow and the best parking.

Together with security from ABC, a total of 20 or more parking marshals will assist and direct participants to parking upon their arrival at the event.

Our Race Information Sheet (Top Events Online webpage) is outlining detail of the events and special mention is made of parking facilities and how it should be utilized. This information is widely communicated to all athletes and spectators via various social media and official Road Race platforms. Also under the rules of Western Province Athletics. See extract from the race flyer :

### **Parking**

Parking is provided for 1200 vehicles at various venues near the race venue at a fee. Marshals will direct participants to parking. Security officials will patrol the venues; however, runners make use of the parking facilities at own risk and must ensure they do not leave any valuable items in their vehicles.

Please note that the owners of vehicles that park illegally, will be held liable by the local Traffic Officials.

Routes to venue and parking information will be available at [www.topevents.co.za](http://www.topevents.co.za)